

Matriculation Number

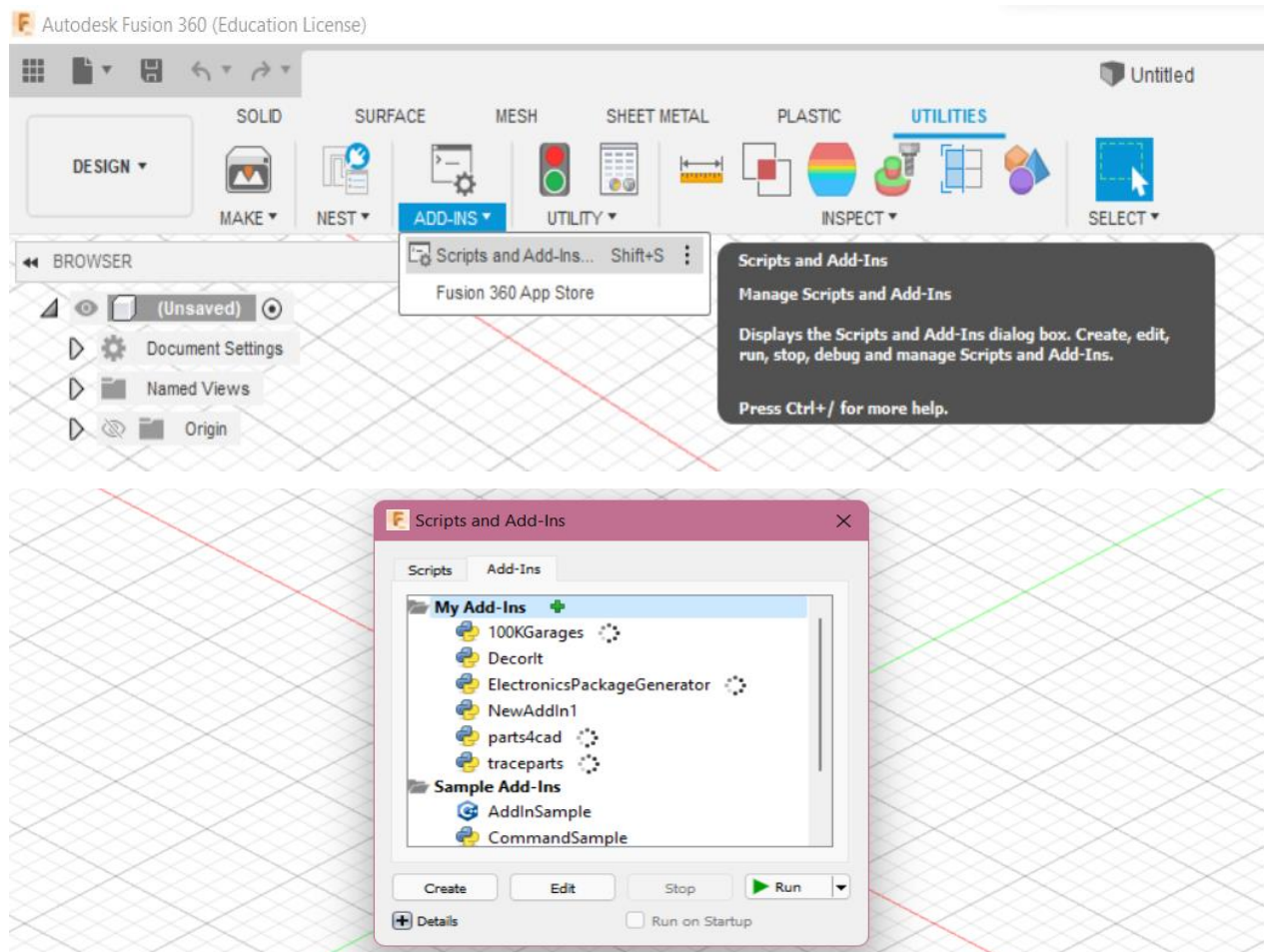
- 407391
- 407413

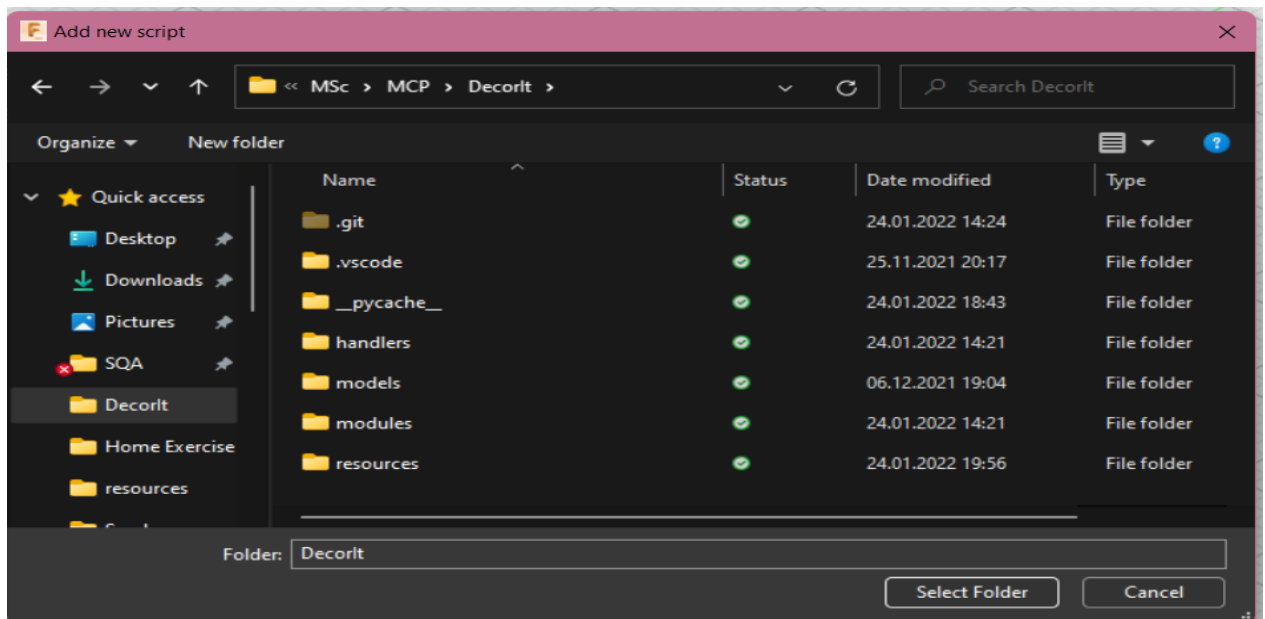
1. Installation (Windows/MacOs)

After downloading the Addin, place the Addin and all its file to an appropriate folder. Give the folder name as same as the Addin.

From UTILITIES> ADD-INS > Scripts and Add-Ins > Add-Ins

Select the plus (+) sign to add the downloaded Add-In from the appropriate path.





After adding in the Add-In RUN button will run the project.

2. Usage

- The main purpose of this Add-In will be decor user's apartment virtually with predefine furniture.
- User can add multiple rooms of user defined sizes.
- User can place rooms in various position.
- Doors and windows can be placed with user defined size in various position.
- If user want to know the individual wall area for painting or wallpaper, it is possible and also the total wall area.
- For decorating the floor user can determine the floor area individually.
- For better visualization, user can show and hide walls while decorating with furnitures.

3. Liminations

- Decorating the windows and the doors with multiple design is still not possible with this Add-In.
- User defined position for placing the windows and door is not possible.
- Multiple floor decoration is still not possible.

4. Design Choices

We put the 'Decor-it' icon into the solid panel. Because into this Add-In all the drawings are solids.

We have developed 5 different tabs for each functionality.

Room Tab: this tab is for create a room with user defined floor sizes and wall sizes. This tab also responsible for adding rooms in different positions.

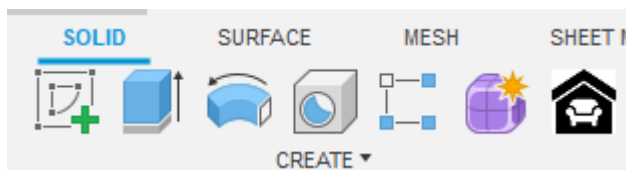
Modify Tab: This tab is for modifying the room created before. This modification means adding windows or doors with user define sizes.

Furniture Tab: From this tab, user can load predefined furnitures into the rooms. Thus this is named as furniture.

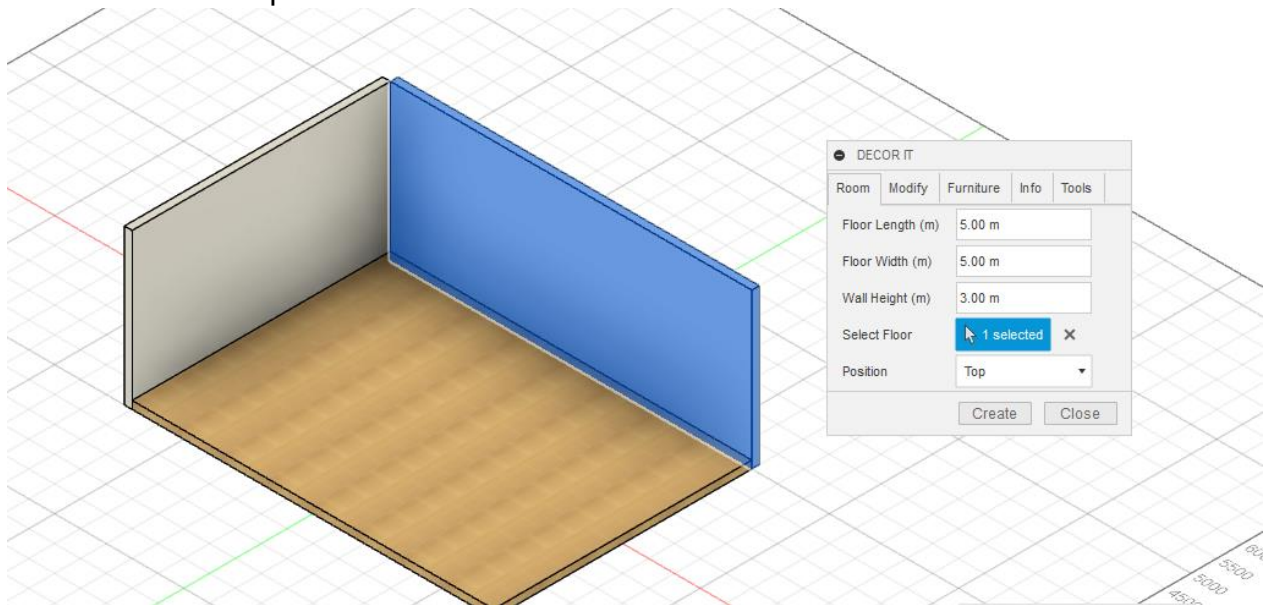
Info Tab: Here user can get all the information regarding walls and floor area. This is placed after other four tabs because this is the last thing user need to know after creating all the rooms.

Tools Tab: This tab contains a tool which allow user to show or hide walls for better visualization.

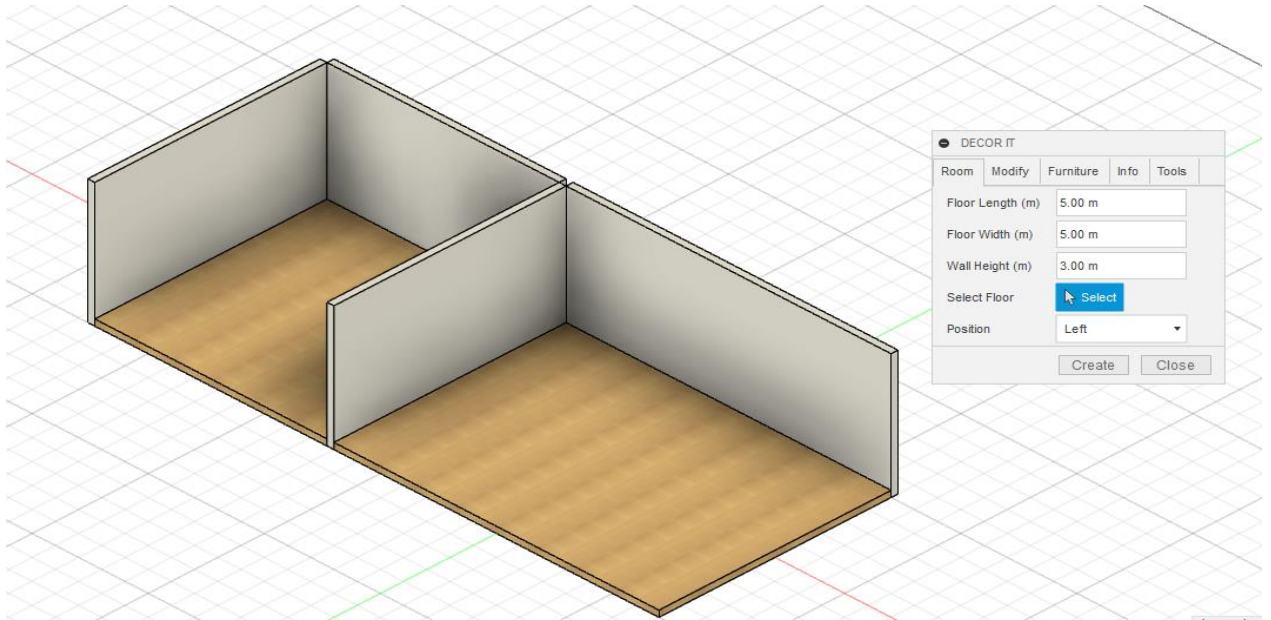
5. Working Procedure



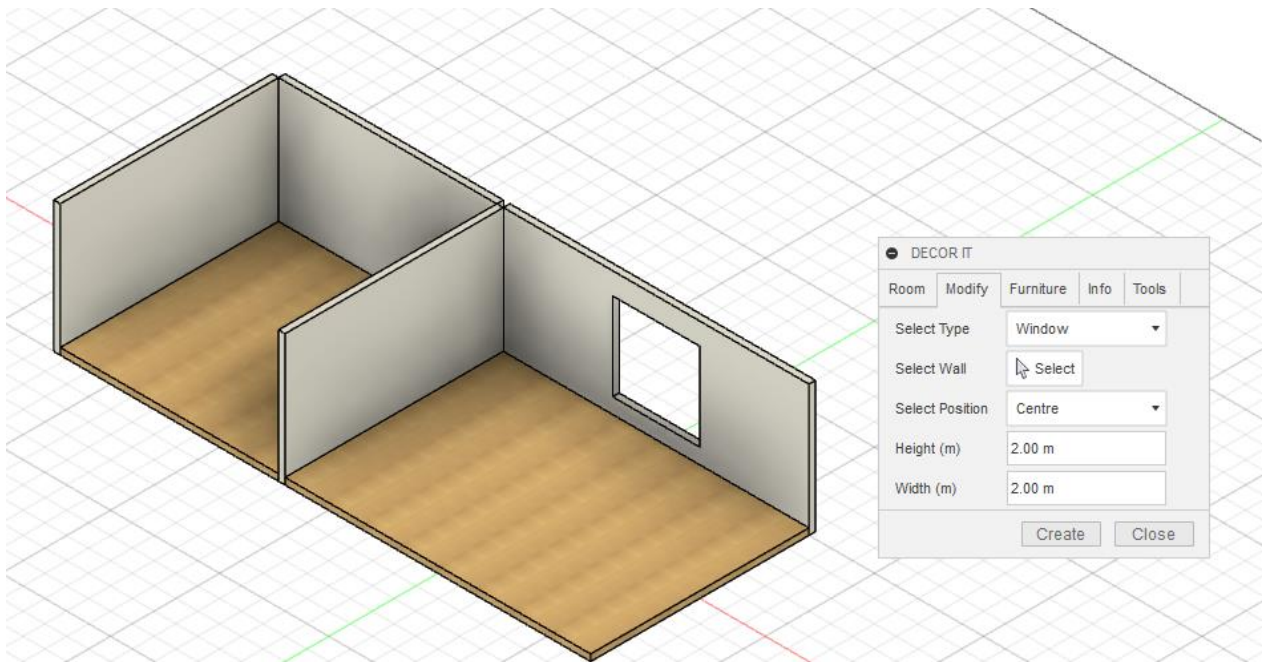
To start the Add-In the user need to click on the 'Décor-it' logo which can be found on the solid panel.



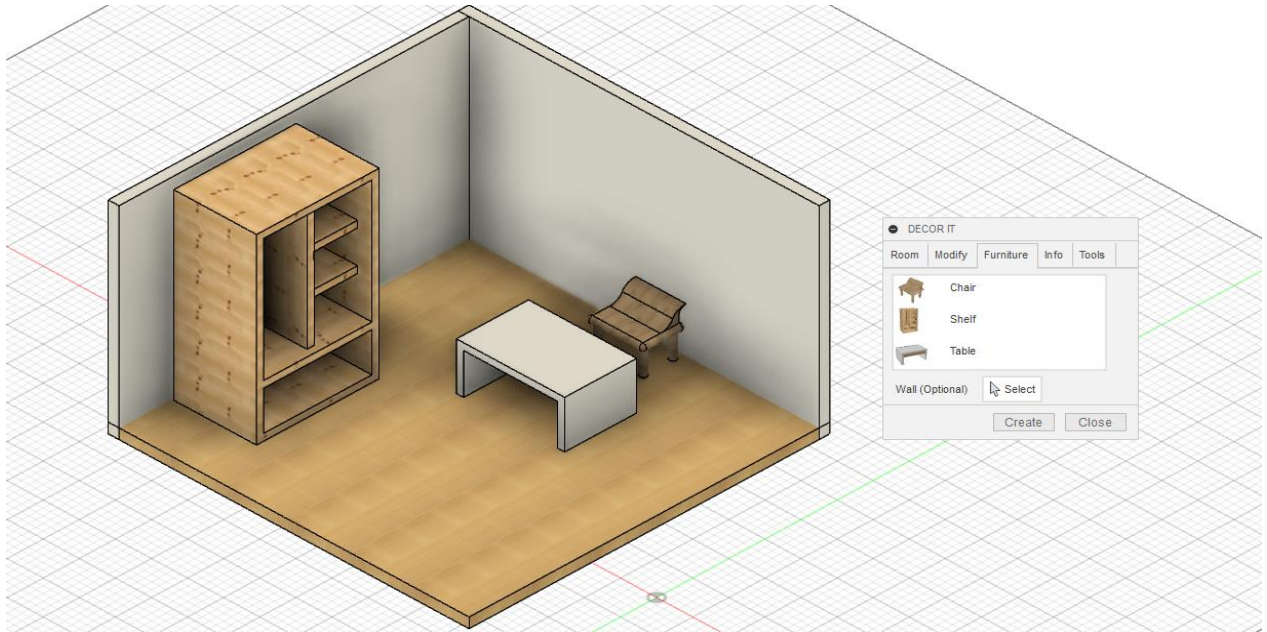
The Room tab is the first tab that appears after starting the Add-In. This tab is called 'Room' and from here user need to create a room first for further placements. To create a room, user need to put Floor Length, Floor Width and Wall Height in meter. Then pressing the 'Create' button will create a room. Camera angle will be fixed automatically.



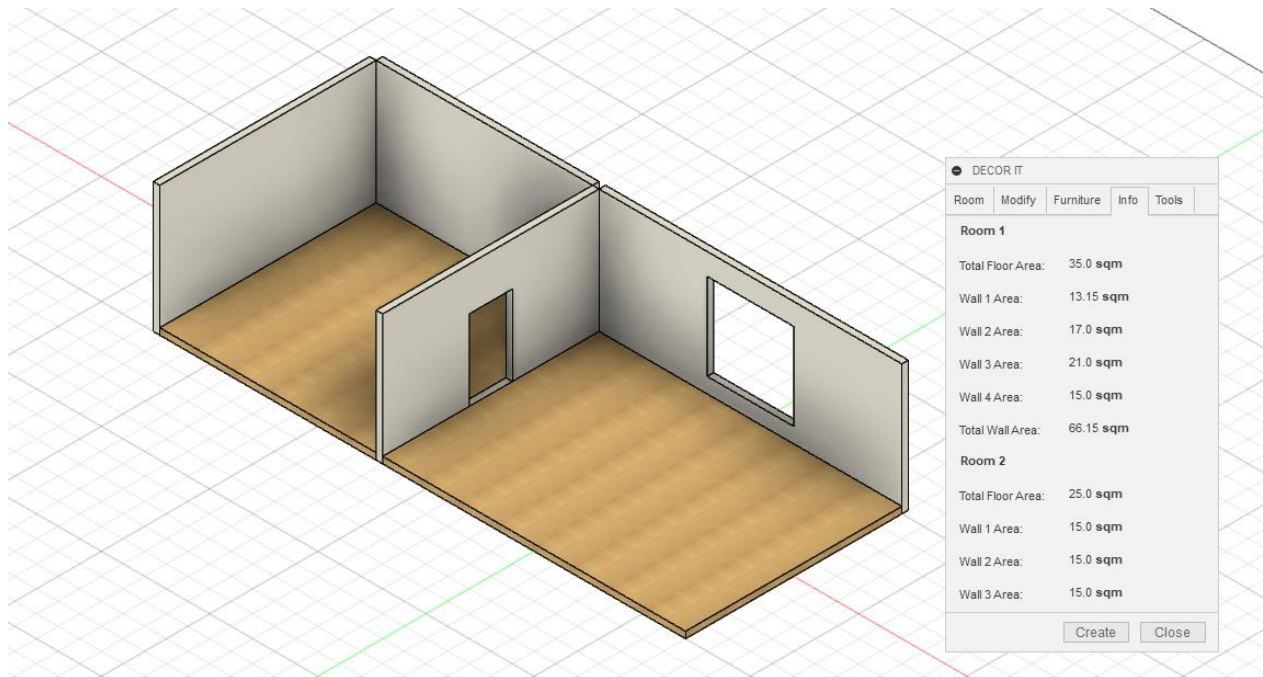
Second time when user will be in the Room tab, the UI shows another feature to create another room. Wall can be selected and thus a position can be mentioned, where the user want to create next room.



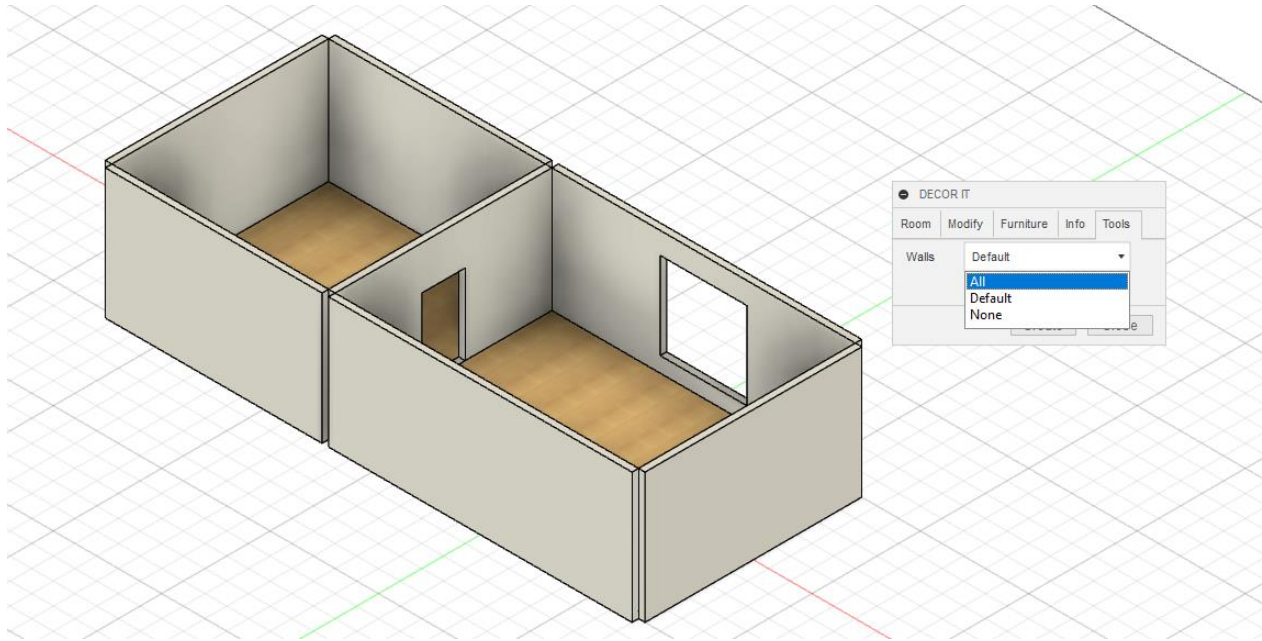
For placing a door or window the user need to use the 'Modify' tab. There user can choice the type between door and window. Next user need to select wall where he/she want to place the window or door. The user can select the position of the window/door as left positioned or right positioned. By default creation will be in centre. After that user need to define the height and width of the door or window. This unit is also in meter.



With Furniture tab, user can select and put furniture from predefined furniture model.



Info tab will gather all the information user need about the floor. Multiple rooms with their individual wall area and total wall area.



In tool tab user can hide and show walls for better visualization purpose. By default front walls are hidden. By selecting All user can see them.

6. Description

This Add-In wants to achieve decoration of user's apartment virtually. By putting various furniture into different places user can have an idea of how his/her apartment will look like. Also by putting different sized window or door, user will know what is best for his/her apartment. When comes to the point of carpetting or putting wallpaper, user can simply see the total floor area or total wall area. This features are not limited to only one room, user can add as many room as he/she likes of required sizes.