

Pen-based Drawing in Augmented Reality on Mobile Phones

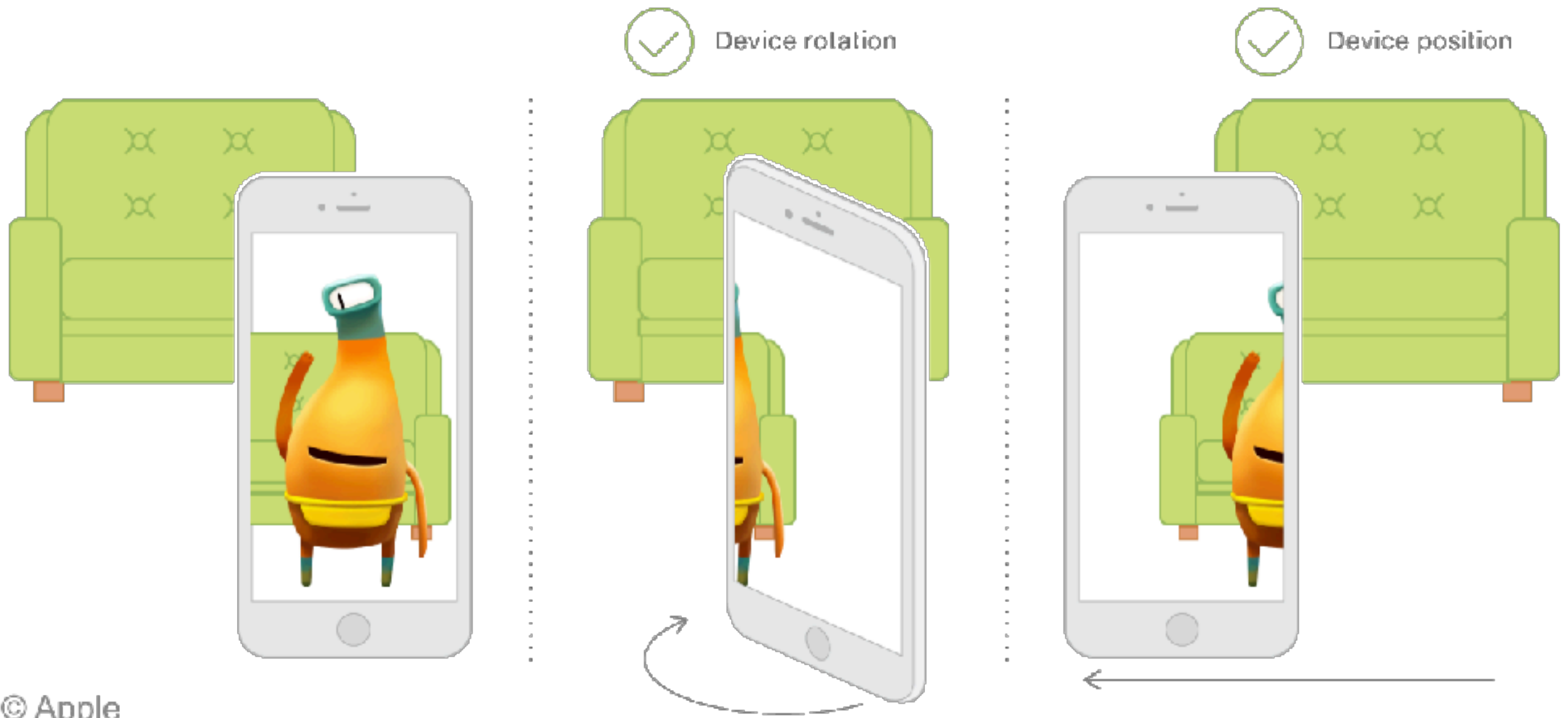
by Felix Wehnert

ARKit

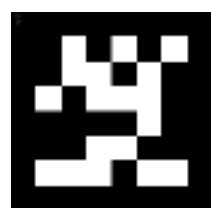


- Uses multiple sensor in connection with the camera (Visual Inertial Odometry)
- World Tracking
- Scene Understanding and Lighting Estimation

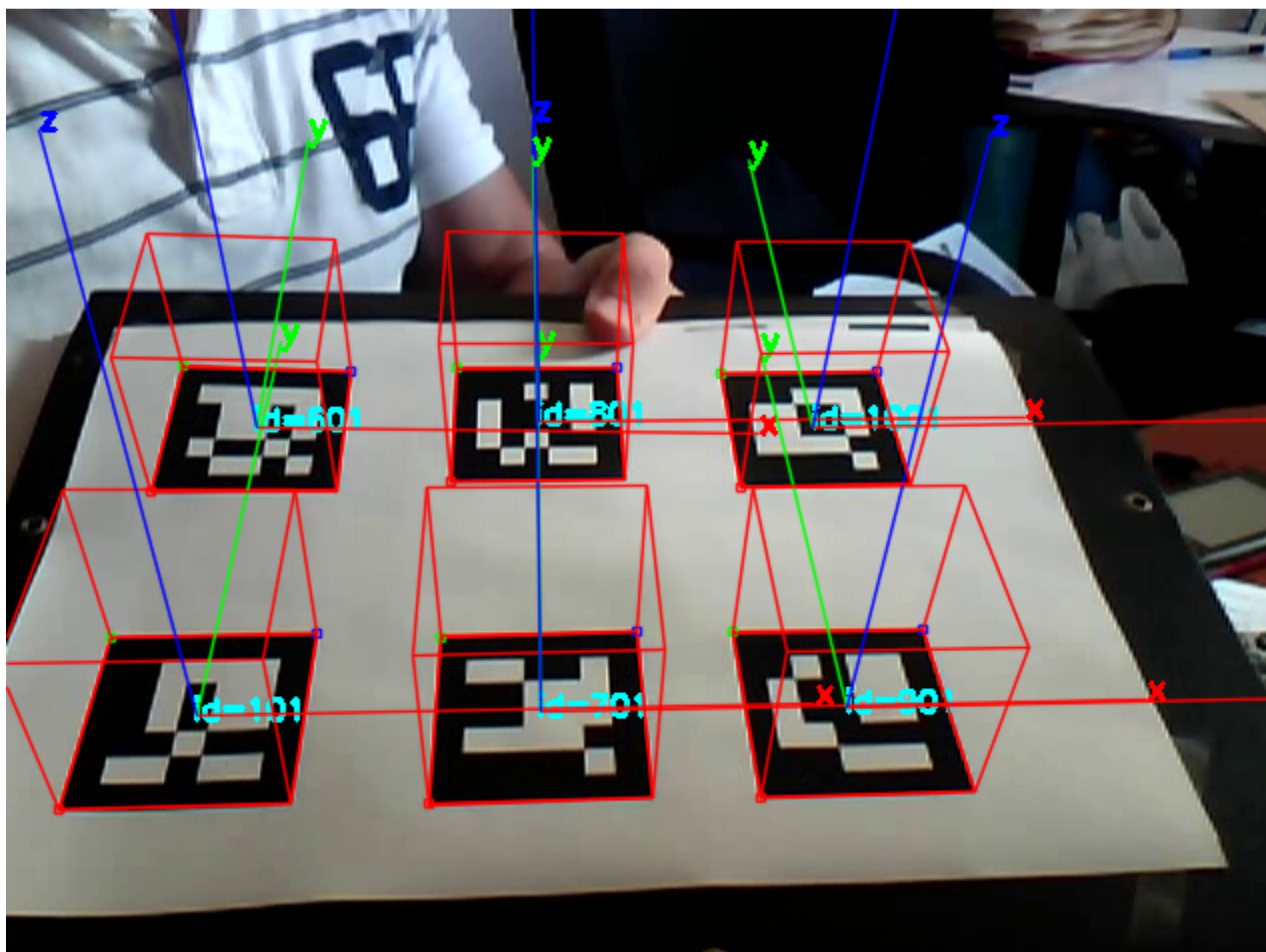
World Tracking

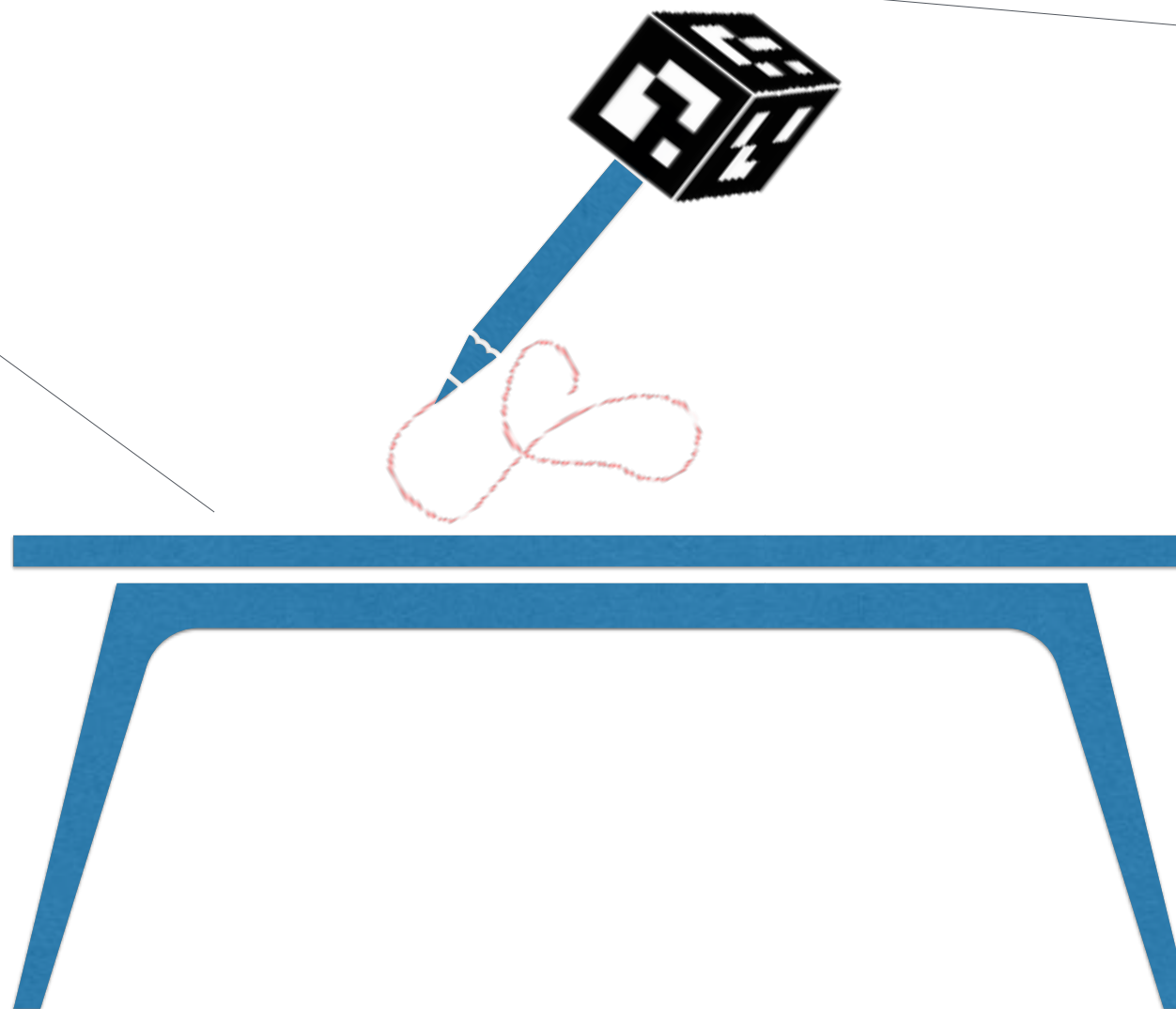
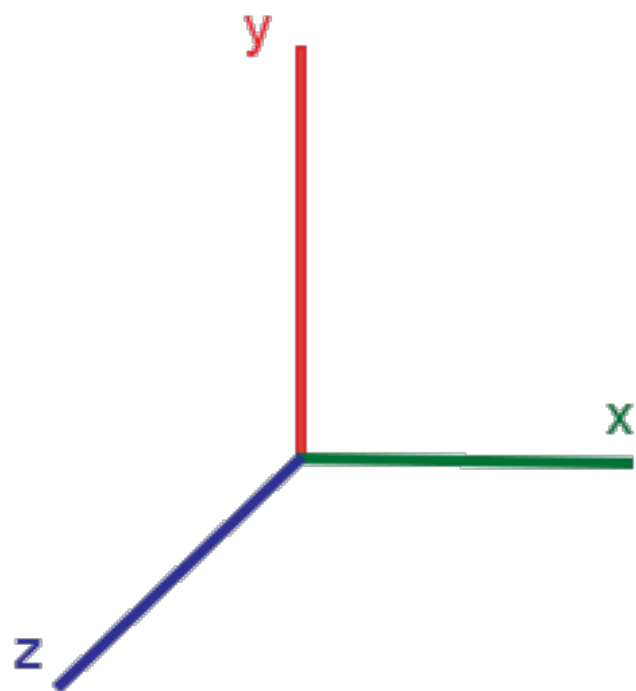


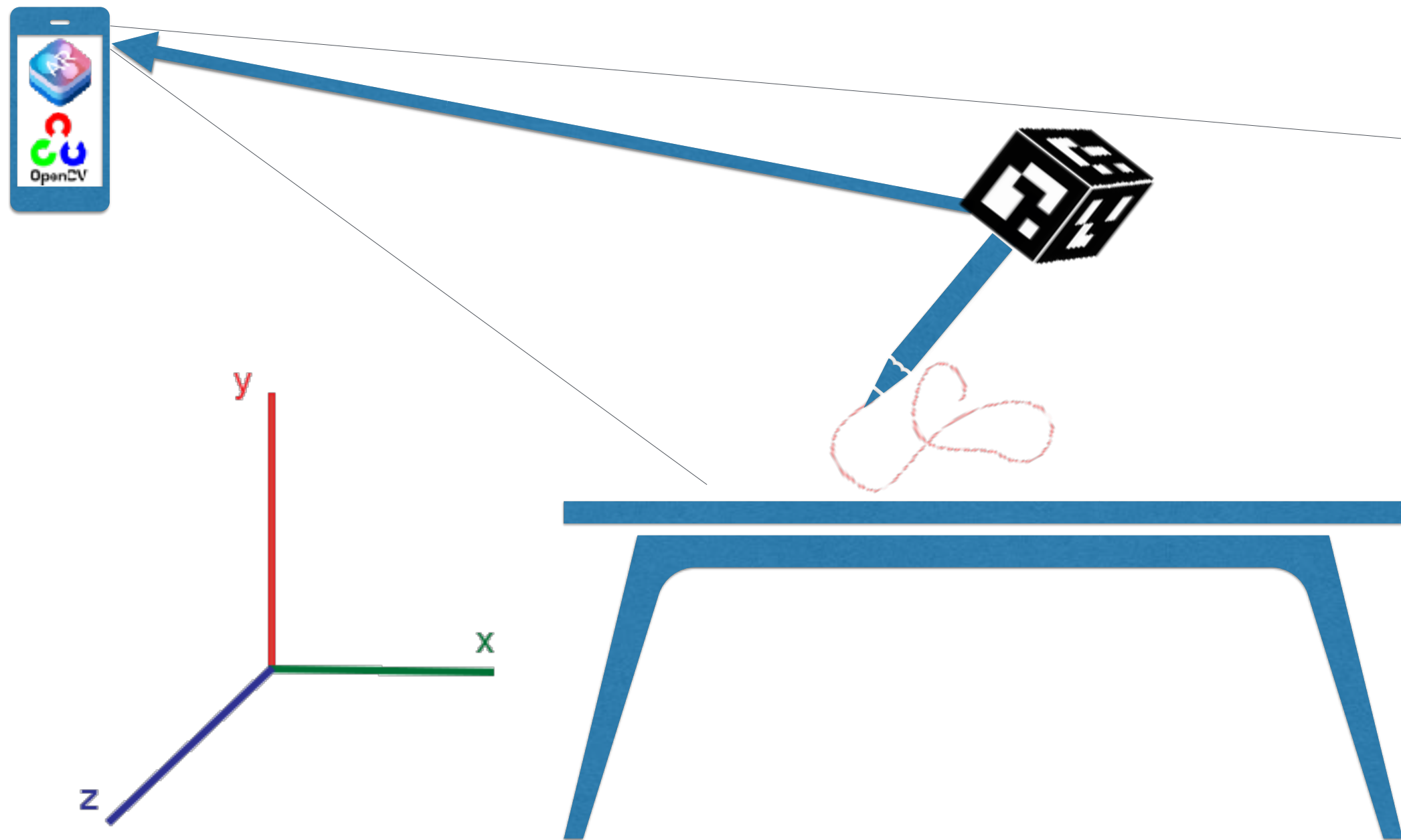


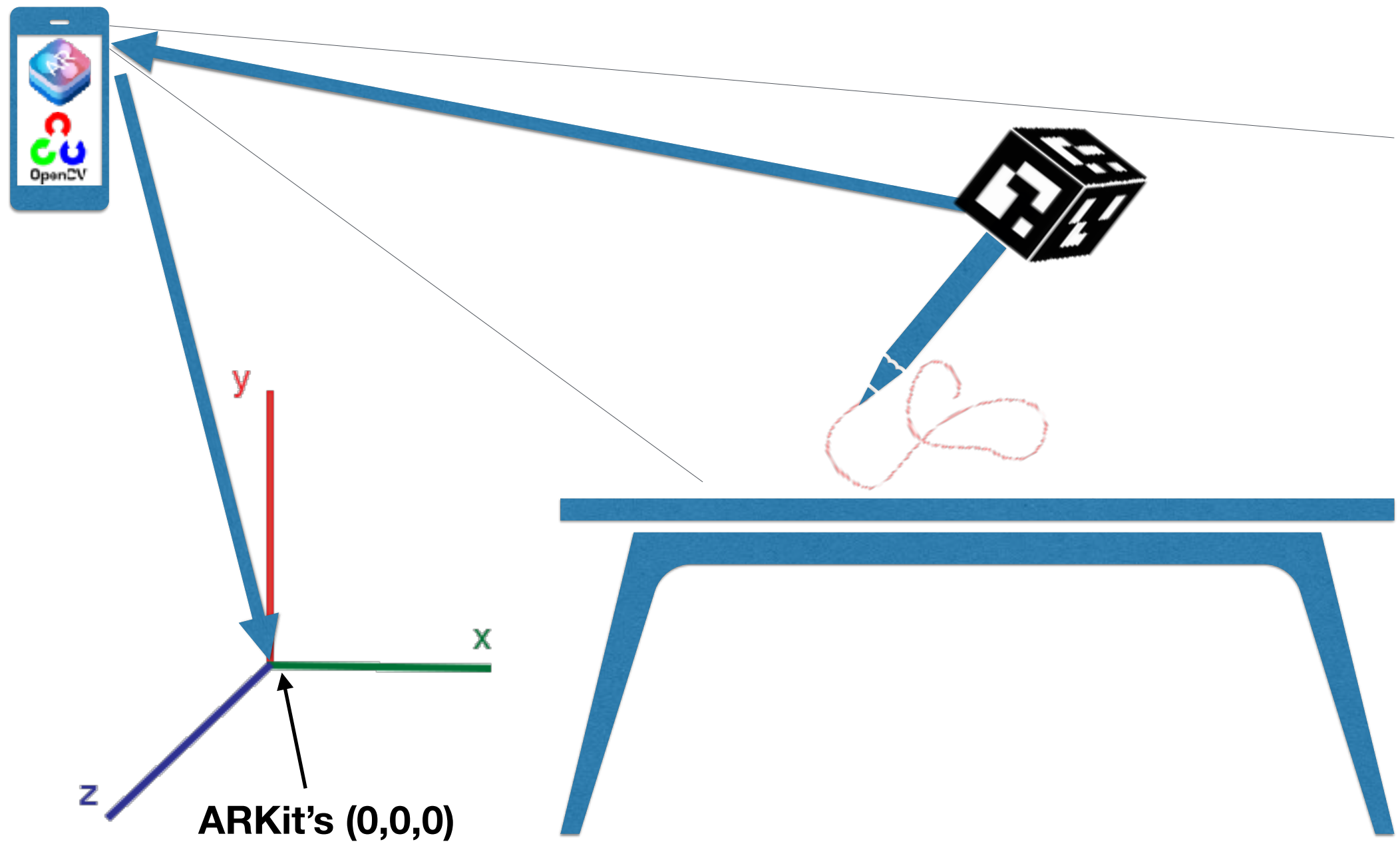


Aruco







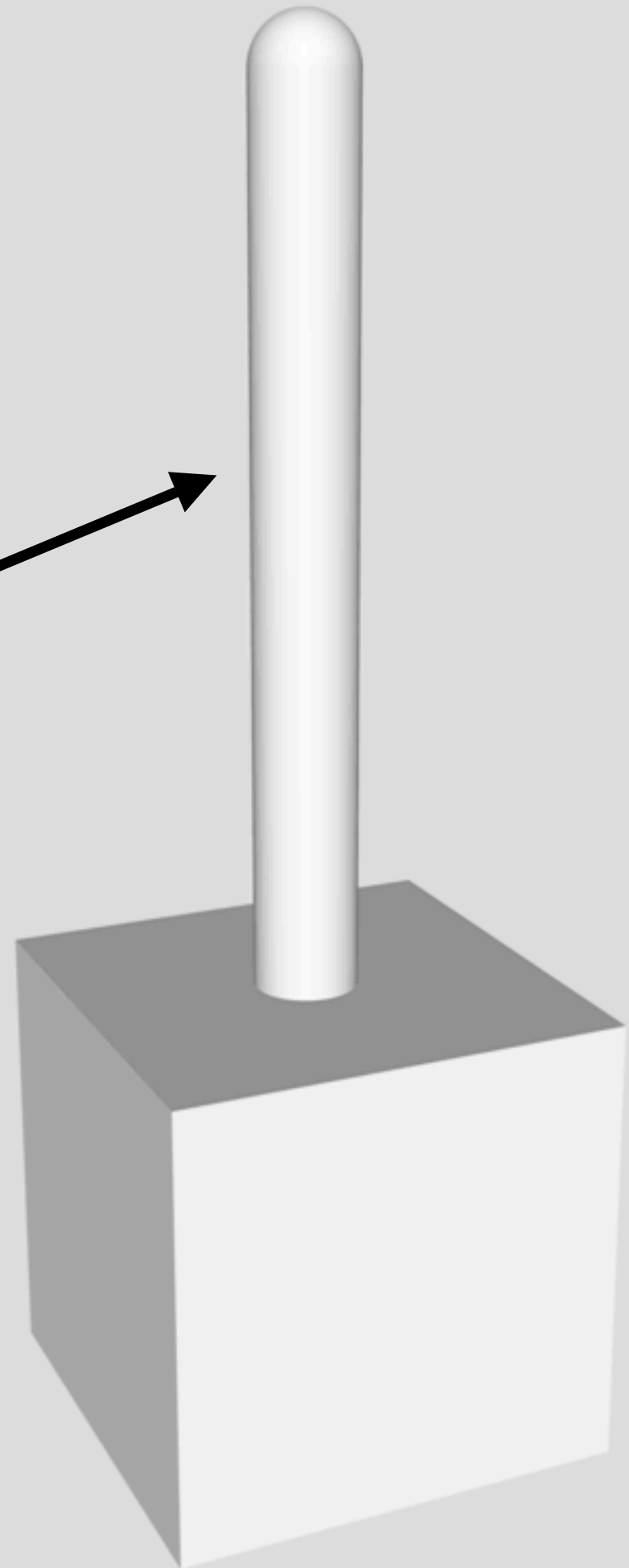


First Version

Something to hold
in your hands



Space for 5
detectable areas



The ARPen

- RedBear Nano v2 bluetooth chip
- 150 mAh battery
- 3 Arduino buttons
- 6 detectable sides

