

Ultimaker Support › 3D Printers › Ultimaker S5 › Maintenance

# Lubricate the Ultimaker S5 feeder gear

January 30, 2020 09:13

To ensure that the feeders forward the filament smoothly and accurately, the gears are lubricated. After many hours of printing, it is recommended to reapply this lubrication. Based on 1,500 printing hours per year, we recommend to lubricate the feeder gear every year. As small filament particles may have stuck to the gears, it is advised to clean them first.

**Tip:** It is also recommended to replace the Bowden tubes after one year. While lubricating the feeder gears, follow the instructions to replace the Bowden tubes simultaneously.

The following steps need to be performed for both feeder 1 and feeder 2:

1. Start by removing the material. Go to the configuration menu, select the material you want to remove and then *Unload*. After this, turn off the printer and remove the power cable
2. Remove the clamp clip from the feeder-end of the Bowden tube, press down on the tube coupling collet and pull the Bowden tube upwards out of the feeder
3. Use the hex screwdriver to loosen the two bolts that hold the feeder to the back panel
4. Carefully move the feeder away from the back panel and disconnect the filament detection cable from the flow sensor

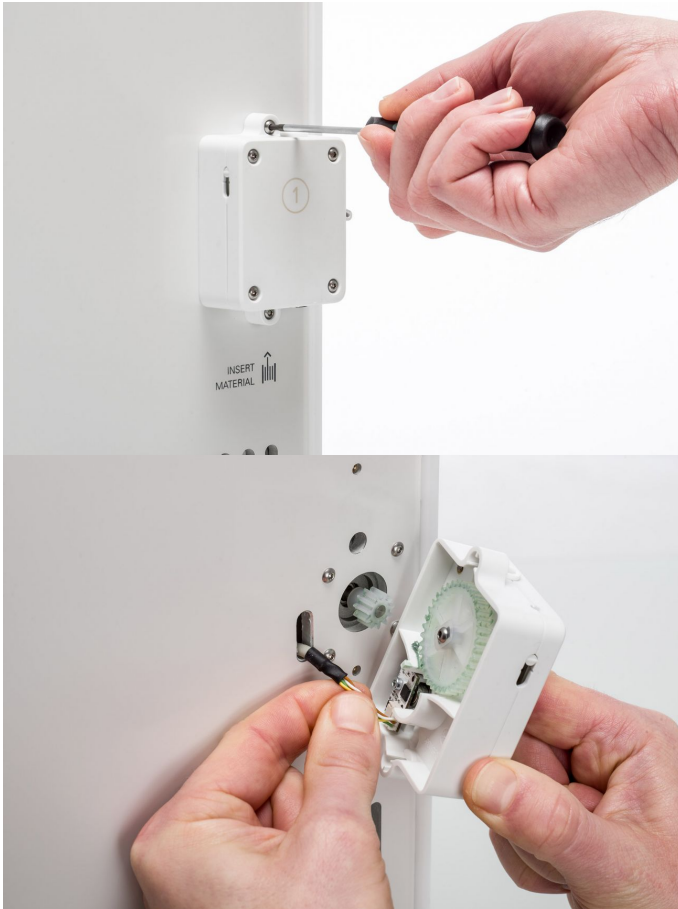
Ask our community of experts

[Go to our community](#)



© Ultimaker Support

8. Place the feeder back on the printer and secure it with the two bolts
9. Insert the Bowden tube into the feeder by pressing down on the tube coupling collet in the feeder and pushing the Bowden tube all the way in. Secure the tube with the clamp clip







› Maintenance schedule of the Ultimaker S5

› Was this article helpful?

› Update the Ultimaker S5 firmware

›   Ultimaker S5 firmware release notes

› 2 out of 2 found this helpful Firmware 6.0 for the Ultimaker S-line

› Material handling and storage for the Ultimaker S5

## Comments

› Cleaning the Ultimaker S5

› Lubricate the Ultimaker S5 axles

› Check for play on the Ultimaker S5 axles

› Check the tension of Ultimaker S5 short belts

Article is closed for comments.

› Check for debris in the Ultimaker S5's front fan of the print head

[See more](#)

## Recently viewed articles

› Replace the Ultimaker S5 Bowden tubes

› Lubricate the Ultimaker S5's Z screw of the Z motor

- › How to perform a hot and cold pull
- › Clean the feeders on the Ultimaker S5
- › Check the quality of the Ultimaker S5 nozzle cover